

# Vehicle Care

## Stormwater Best Management Practices



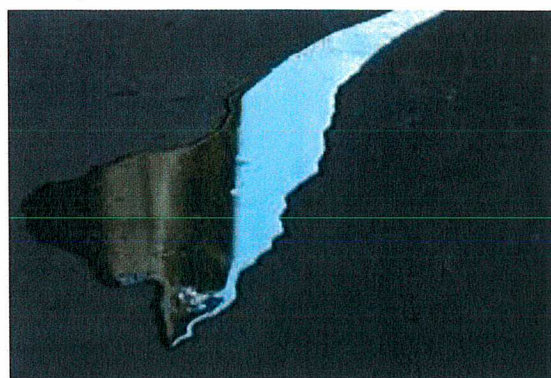
Many automotive fluids — oil, antifreeze, de-greasers — are hazardous materials. Leaking vehicles leave stains of oil, grease, and transmission fluid on driveways and parking lots. Rain or irrigation water washes over these areas, carrying pollutants to the storm drain. When washing your car, detergents and solvents run off into the street into storm drains. Water from the storm drains is directly discharged into our lakes and rivers without being treated.

### Did You Know?

You can use absorbent material like kitty litter to clean up spills; sweep up and properly dispose of in trash.

### What Can I Do?

- Never dump used motor oil in the storm drain; recycle oil and other automotive fluids.
- Avoid spills by using a drip pan.
- Avoid hosing down your garage and driveway; sweep instead.
- Wash your vehicle at a commercial car wash or wash over a lawn or gravel driveway.



For additional information or questions, please contact:

Maricopa County Environmental Services Department

Stormwater Quality Program

1 001 N Central Ave, Ste 300

Phoenix, AZ 85004

602-506-5557

[www.maricopa.gov/stormwater](http://www.maricopa.gov/stormwater)



# Mobile Cleaning - Vehicles

## Stormwater Best Management Practices



Storm drains are found in our streets and parking lots. You probably walk by a few of them a day, but just don't think much about them. Storm drains are put in place to gather stormwater runoff and bring to our local waterways (rivers, lakes, washes, and retention basins). Storm drains don't remove any pollution before entering our waterways. Stormwater runoff is now one of the leading causes of water pollution in the United States. Stormwater will pick up dirt, trash, oil, grease, chemicals, and other pollutants as it flows over parking lots and streets. So, if mobile cleaners aren't careful, they could be harming the environment. With the right knowledge, staff can prevent pollution from entering storm drains, therefore, helping to improve the water quality in local waterways.

## What Can I Do?

- Wastewater may not be disposed of in streets, parking lots, gutters, or storm drains.
- Temporarily cover and protect storm drain inlets.
- Contain and collect wastewater on site — use a portable impervious surface such as a portable wash pit, vacuum recovery unit, or compactible device if washing on a porous surface. Discharge wastewater through an interceptor to the sanitary sewer (check local regulations). If wastewater can't be disposed of through an interceptor on site, NHLW hauler for proper removal and disposal.
- Engine degreasing chemicals and wastewater is hazardous waste and must be disposed of accordingly.
- Use non-toxic, less hazardous, or biodegradable products when possible.
- Properly dispose of chemicals— do not pour into sink, storm drain, or street.
- Train employees to practice pollution prevention.



For additional information or questions, please contact:  
Maricopa County Environmental Services Department

Stormwater Quality Program  
1001 N Central Ave, Ste 300  
Phoenix, AZ 85004  
602-506-5557

[www.maricopa.gov/stormwater](http://www.maricopa.gov/stormwater)

